



# Weaving at the Bauhaus: Origins and Influences

---

Julia E. Benson

TEXT 6910

Fall Semester, 2003



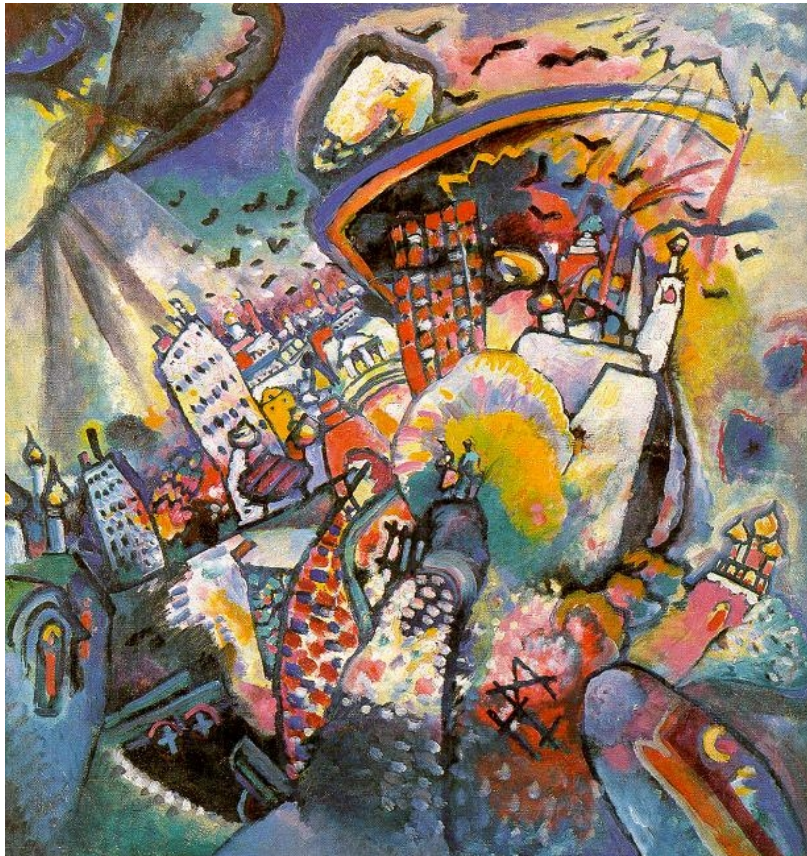
# Johannes Itten

---



- *Horizontal-Vertikal*, 1915

# Wassily Kandinsky



- *Moscow I*, 1916  
Oil on canvas
- Collection of State Tretjakov Gallery, Moscow

# Paul Klee

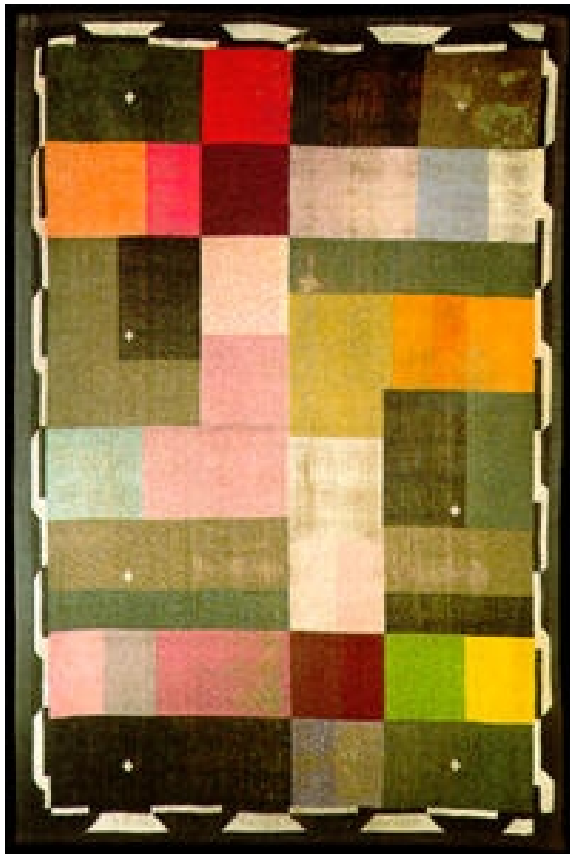


- Komposition mit fenstern (Komposition mit dem "B"), 1919.  
Oil paint and ink on cardboard, 50,4x38,3 cm.
- Collection of Paul Klee-Stiftung, Kunstmuseum, Bern



# Weimar Textiles

---



- Designer: Ida Kerkovius
- Knotted carpet, 1923.  
Wool, 194 x 300 cm.
- Collection of the Bauhaus Archive



# Weimar Textiles

---



- Designer: Gunta Stölzl
- Detail of wall hanging, 1923 (linen, wool, viscose, and cotton; 260 x 122 cm)
- Collection of Kunstsammlungen, Weimar





# Weimar Textiles (cont.)

---



- Designer: Benita Koch-Otte
- Wall-covering semi-gobelin tapestry, c. 1923  
wool and cotton colour  
scheme of red, green, black  
and white  
159 x 110 cm

# Weimar Textiles (cont.)



- Designer: Benita Koch-Otte
- *Kinderzimmerteppich*, wall hanging, c. 1923
- Collection of the Bauhaus-Museum of the Kunstsammlungen zu Weimar



# Dessau Textiles



- Grete Reichardt
- Iron-yarn-belts, 1926, for the first steel tube chairs by Marcel Breuer and Mies van der Rohe .
- Bauhaus-Iron-yarn-belts consist of multiple twisted cotton threads. The "hard" yarn gets its solidity by paraffining. The natural structure of the fabric is maintained by a visible selvage and by knots and is a sign for original reproduction, no defect.

# Dessau Textiles (cont.)



- Designer: Gunta Stölzl
- Gobelin tapestry, 1927-1928

# Dessau Textiles (cont.)



- Designer: Gunta Stölzl
- 5 Chöre (5 Choirs), 1928  
Jacquard wallhanging, wool, cotton, silk
- Collection of Museum für Kunst und Kulturgeschichte der Hansestadt Lübeck



# Dessau Textiles (cont.)

---



- Designer: Gunta Stölzl
- Fabric sample, 1928, wool and other fibers
- In archives of the Museum Bellerive, Zürich

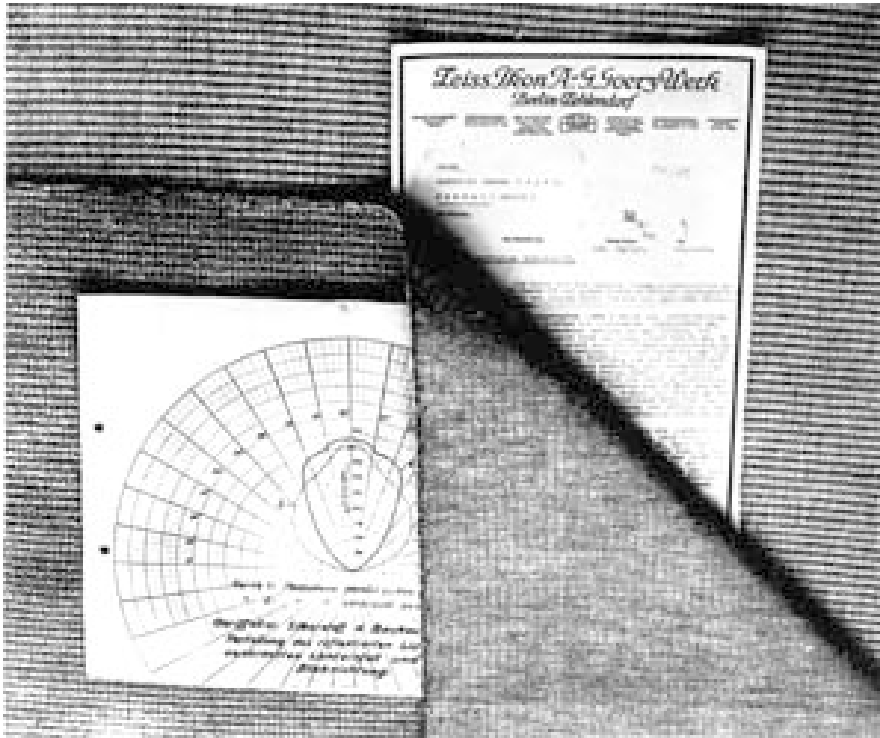


# Dessau Textiles (cont.)

---



- Designer: Anni Albers
- Wall covering material, 1929  
Cotton and cellophane. 22.9 x 12.7 cm (9 x 5 inches)



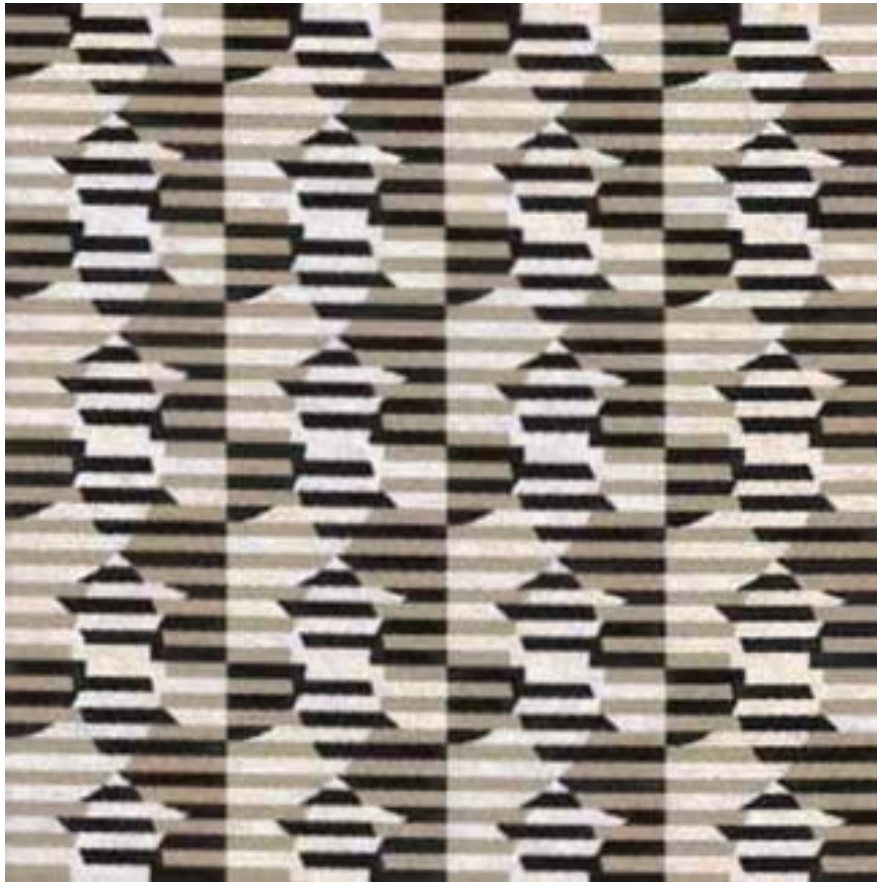
- Designer: Anni Albers
- Sound absorbing and light-reflecting wall covering material, 1929  
Double weave, cotton chenille and cellophane
- Albers submitted this fabric as the final requirement for her Bauhaus diploma.





# Dessau Textiles (cont.)

---



- Designer: Alma Tchildran
- Textile, 1929  
Wool, size and construction unknown



# Otti Berger

---



- “C.S.P.”, bed cover or curtain fabric, c. 1930s, designed for the Dutch textile company De Ploeg
- Used as endpaper for the Persephone Press publication of Etty Hillesum’s *“An Interrupted Life.”*

# Friedl Dicker-Brandeis



- Wall carpet for children's room, 1931



# Anni Albers

---



- *Monte Alban*, 1936
- Silk, linen, and wool. 146 x 112 cm (57-3/8 x 44 inches)
- Collection of the Busch-Reisinger Museum, Harvard University Art Museums

# Anni Albers (cont.)



- "Ancient Writing," 1939  
Wall hanging, 59 1/4 x 44 in. (150.5 x 111.8 cm.)
- Collection of the  
Smithsonian American Art  
Museum



# Anni Albers (cont.)

---



- Drapery material, ca. 1944  
Plastic, copper foil, and cotton. 138.4 x 83.8 cm (54-1/2 x 33 inches)
- Created on commission from architect Philip Johnson for the Rockefeller Guest House at East 57th Street in New York City.





# Anni Albers (cont.)

---

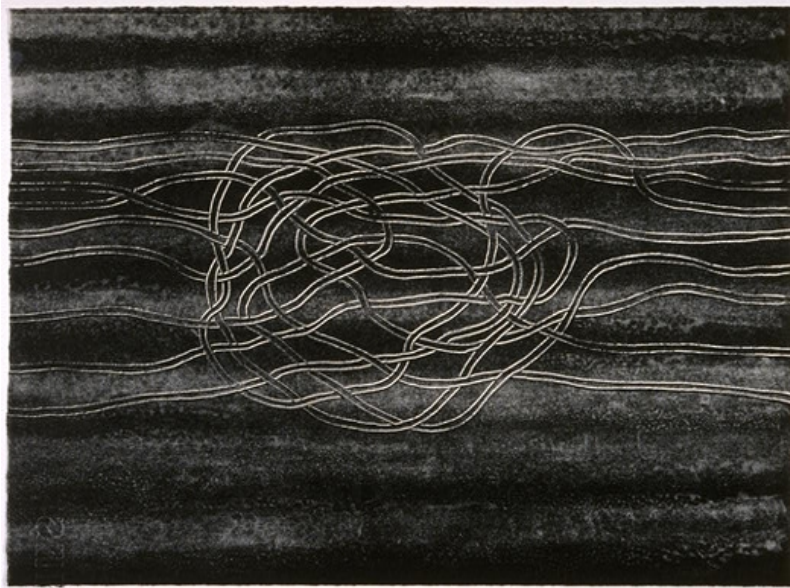


- “Red and Blue Layers,”  
1954  
Cotton, 61 x 36.8 cm
- Collection of the Josef and  
Anni Albers Foundation



# Anni Albers (cont.)

---



- Untitled (Line Involvements V), 1964  
lithograph (stone) in two blacks on white Arches paper, sheet: 36.8 x 50.2 cm (14 1/2 x 19 3/4 in.)
- Collection of the National Gallery of Art

# Anni Albers (cont.)

---



- *Maze*, 1979  
Printed cotton (left),  
Acid-etched  
polyester/cotton (right)
- Manufactured by SUNAR



# Marli Ehrman

---



- Organic armchair, 1941
- Designed by Heywood-Wakefield Company



# Jack Lenor Larsen

---

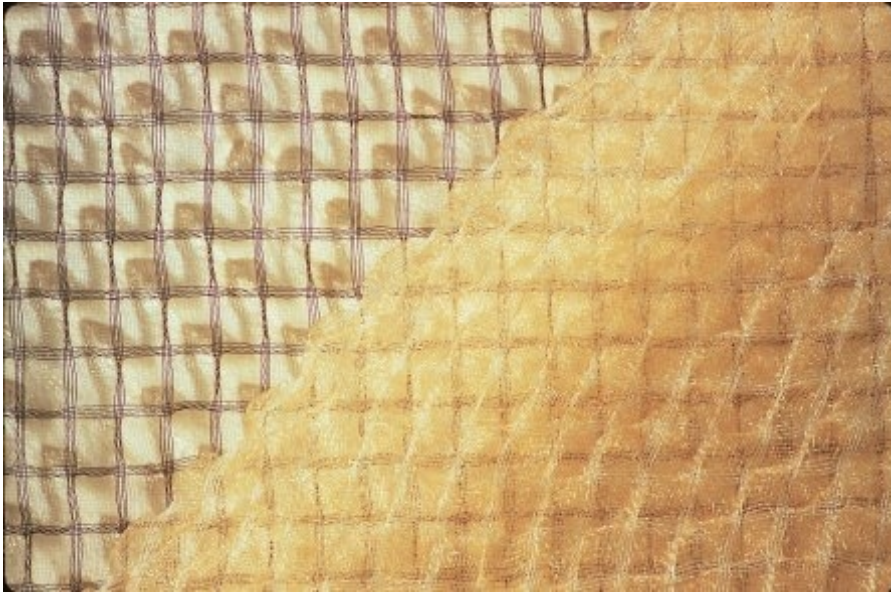


- *Interlace*  
Owned by Cowtan & Tout



# Jack Lenor Larsen (cont.)

---



- *Nimbus/Cumulus*  
Owned by Cowtan & Tout





# Dorothy Liebes

---



- Fine Donald Deskey chair, by Royal Chrome Co., stainless steel frame with decorative ball trim and upholstered seat with original Dorothy Liebes fabric



# Lore Kadden Lindenfeld

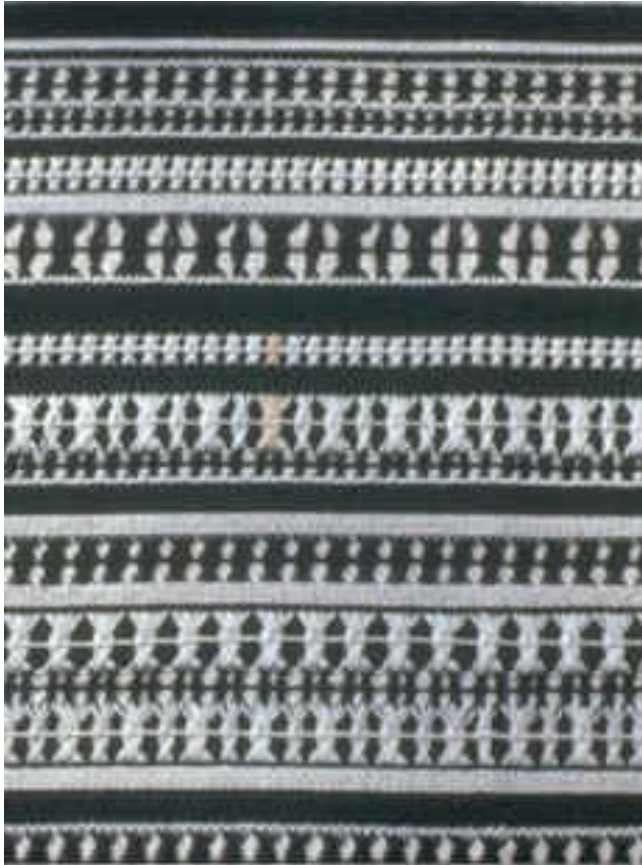
---



- Double weave sample with rectangular floats, 1945-48  
10 x 6 inches  
grey rayon background with brown, rust, grey textured floats
- Woven while a student at Black Mountain College

# Lore Kadden Lindenfeld (cont.)

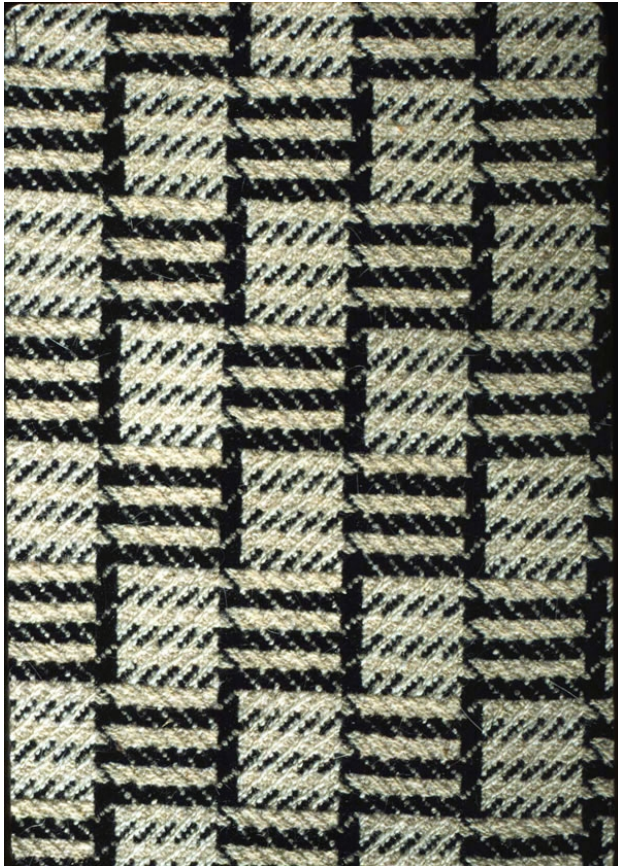
---



- Double-weave with Leno, 1948 (Black Mountain College). Detail.
- Collection of the Smithsonian, American Art Museum (Renwick), Washington, D.C. Gift of the Josef and Anni Albers Foundation.

# Lore Kadden Lindenfeld (cont.)

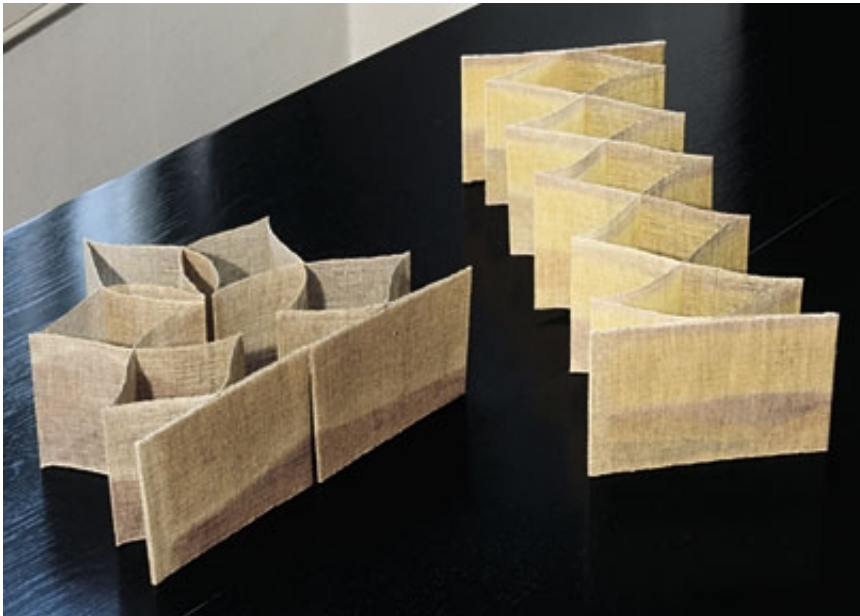
---



- Sample of wool coating, 1950  
rust/white/black horizontal strips
- designed for Kanmak Textiles



# Kay Sekimachi

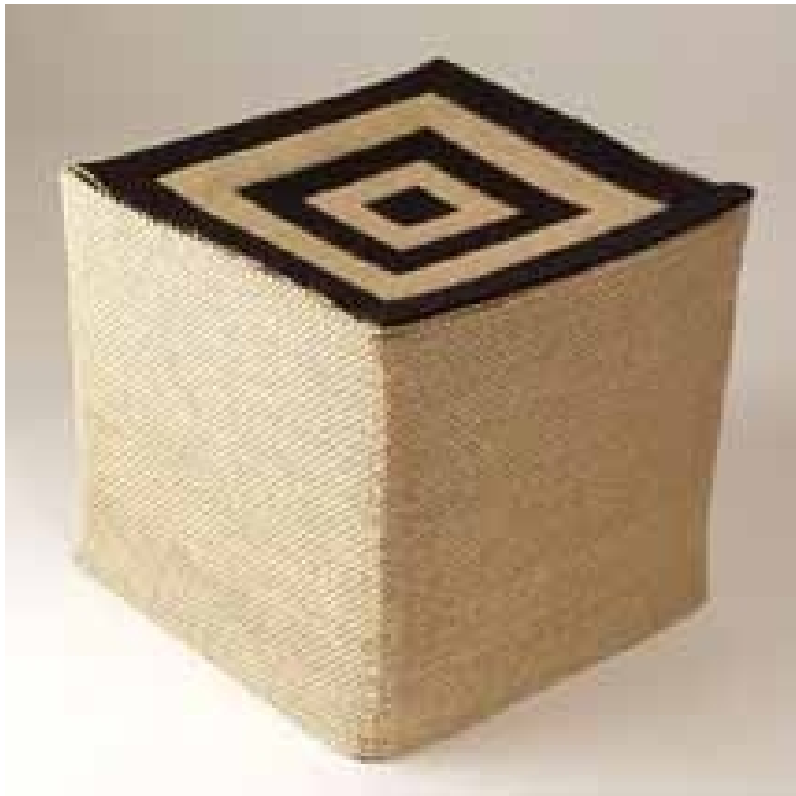


- MOON AND MAUNA KEA IV (left) 1998  
linen, heat transfer print on warp, overprinting and doubleweave, buckrum and stitch witchery  
3 1/2"(h) x 23" x 5" when extended
- HAYDEN VALLEY II (right) 1998  
linen, heat transfer print on warp, overprinting and doubleweave, buckrum and stitch witchery  
3 5/8"(h) x 23" x 5 1/2" when extended



# Kay Sekimachi (cont.)

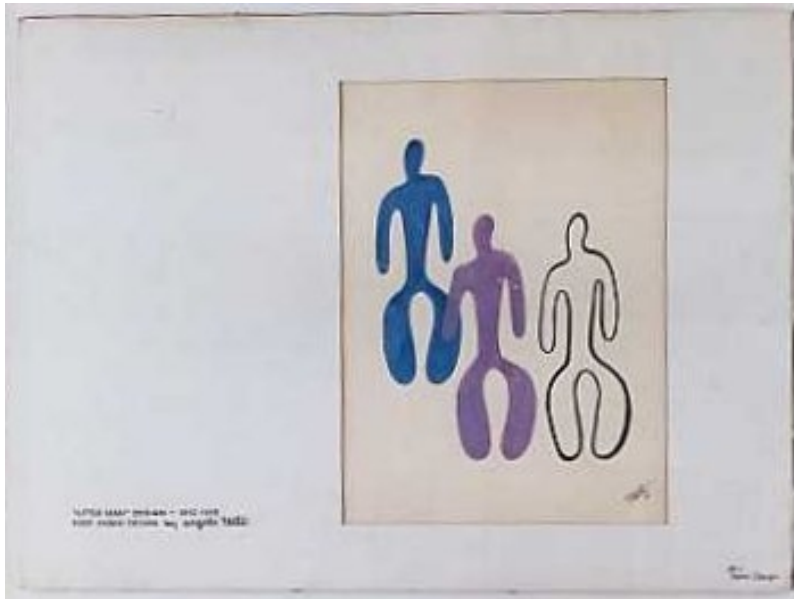
---



- Nesting Box c. 1974  
Linen, five layered weave, double weave pick-up. 7 1/2" x 7 1/2" x 7 1/2".
- Collection of Jack Lenor Larsen



# Angelo Testa



- Original gouache on paper, illustration for fabric later produced by Angelo Testa & Co. Matted with hand letter text, "'LITTLE MAN DESIGN", 1942-1943, FIRST FABRIC DESIGNED BY ANGELO TESTA".

# Angelo Testa (cont.)



- STILTS, available in various color schemes.

# Angelo Testa (cont.)



- TIMBER for GREEFF, available in various color schemes.

# Angelo Testa (cont.)



- TEXTURA PLAID for GREEFF, available in various color schemes.

# Angelo Testa (cont.)

- Group of fabric design illustrations. One dated 1970, others undated.





# Vorwerk Teppichwerke

---

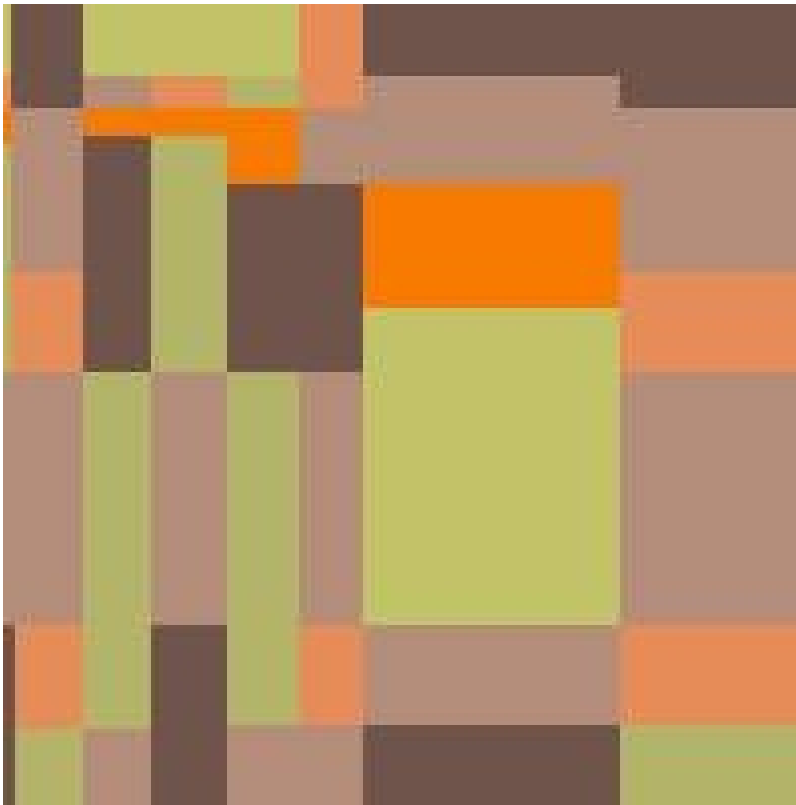


- Designer: Gertrud Arndt



# Vorwerk Teppichwerke (cont.)

---



- Designer: Gertrud Arndt

# Vorwerk Teppichwerke (cont.)

---



- Designer: Monica Bella-Broner

# Vorwerk Teppichwerke (cont.)

---



- Designer: Monica Bella-Broner

# Vorwerk Teppichwerke (cont.)

---



- Designer: Not credited, possibly Kitty Fischer

# Vorwerk Teppichwerke (cont.)

---



- Designer: Not credited, possibly Kitty Fischer

# Vorwerk Teppichwerke (cont.)

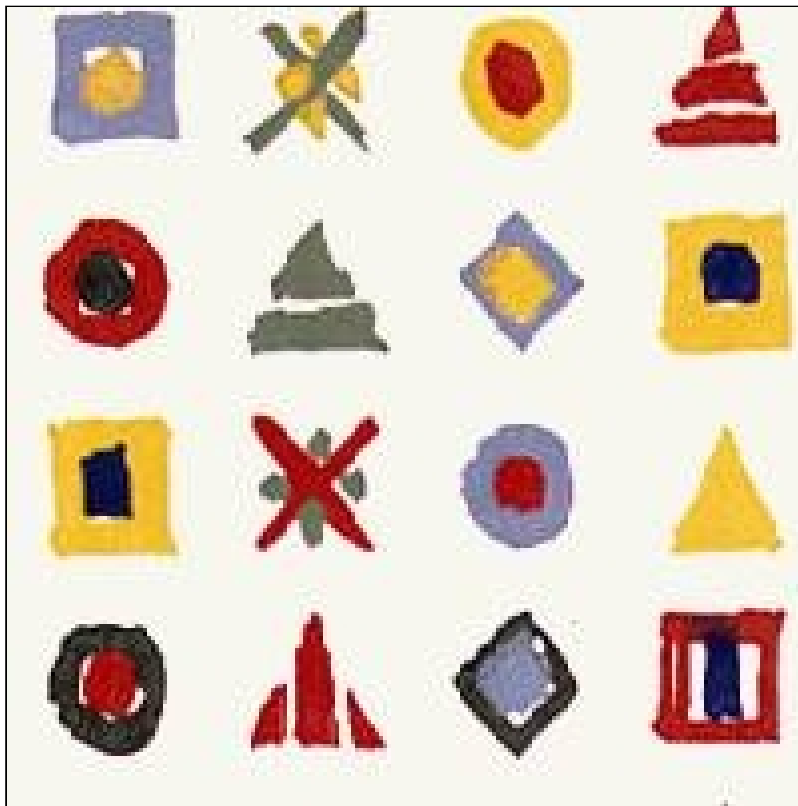
---



- Designer: Grete Reichardt



# Vorwerk Teppichwerke (cont.)



- Designer: Gunta Stölzl

# Gunta Stölzl Designs by Christopher Farr Galleries



- Handknotted carpet, Edition of 15  
Size: 3.15 x 2.38m (10'4" x 7'10")

# Gunta Stölzl Designs by Christopher Farr Galleries (cont.)



- Handwoven flatweave, Edition of 15
- Size: 3.60 x 2.50m (11'10" x 8'3")

# Gunta Stölzl Designs by Christopher Farr Galleries (cont.)



- Tapestry, Edition of 15  
Size: 1.47 x 1.11m (4'7" x 3'7")

# Gunta Stölzl Designs by Christopher Farr Galleries (cont.)



- Handknotted carpet, Edition of 15  
Size: 3.98 x 1.60m (13' x 5'3")

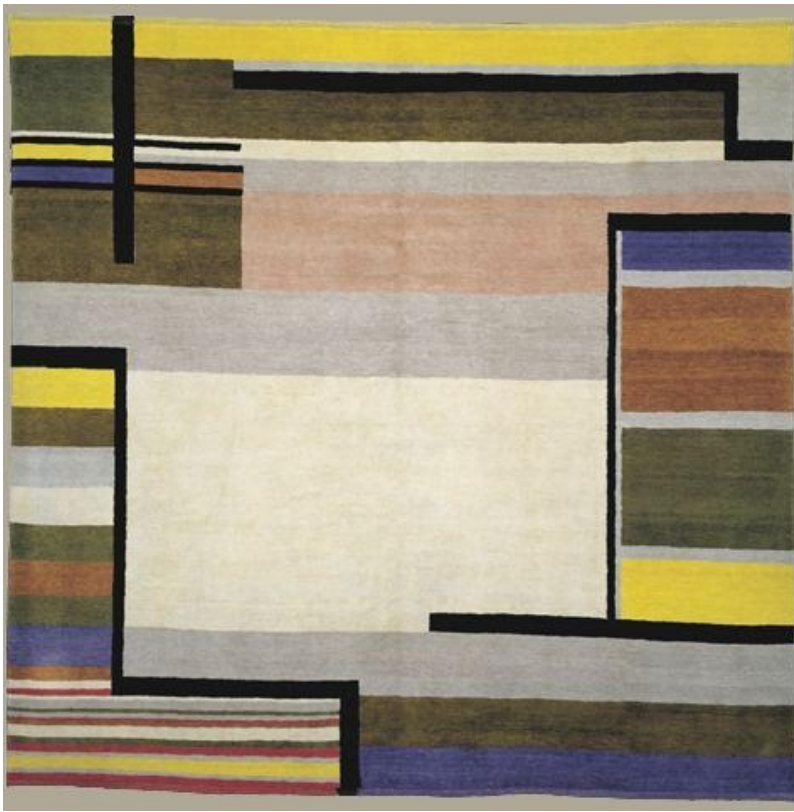
# Gunta Stölzl Designs by Christopher Farr Galleries (cont.)



- Flatweave. Original design from the Bauhaus, 1926  
Edition of 15  
Size: 3 x 3m (9' 10" x 9' 10")



# Gunta Stölzl Designs by Christopher Farr Galleries (cont.)



- Handknotted carpet,  
Original design from the  
Bauhaus, 1926  
Edition of 15  
Size: 3 x 3m (10' x 10')

# Gunta Stölzl Designs by Christopher Farr Galleries (cont.)



- Handknotted carpet, Edition of 15  
Size: 3.60 x 2.50m (11' 9" x 8' 3")

# Anni Albers' Loom Today



- Front view of loom as it appears today at Allegheny River Textile Studio, Foxburg, PA

# Anni Albers' Loom Today



- Sigrid Piroch, director of Allegheny River Textile Studio, Foxburg, PA, weaving on Anni Albers' restored 12-shaft countermarche loom